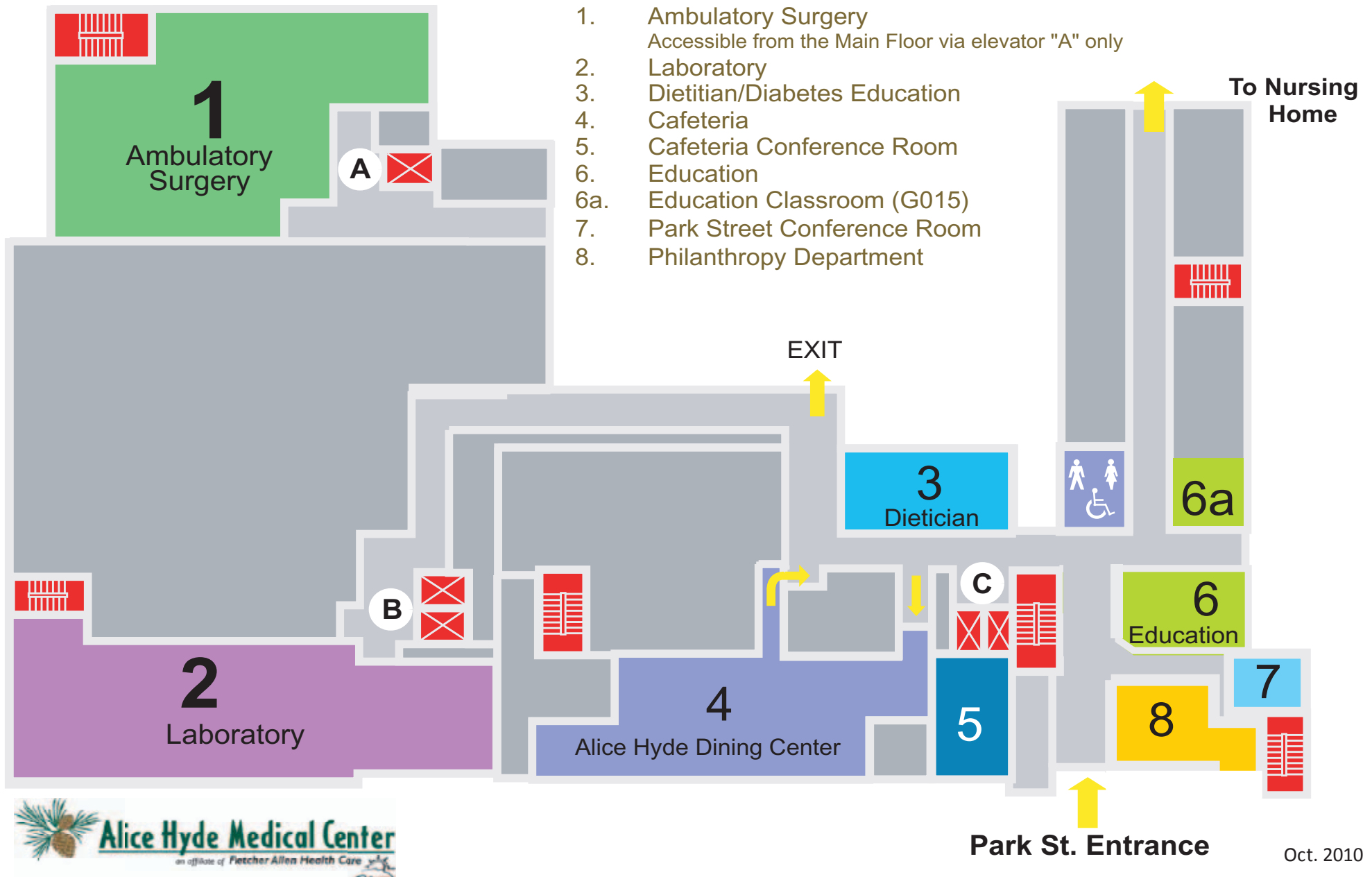


Ground Floor

- A. Elevator "A"
- B. Elevator "B"
- C. Elevator "C"



1. Ambulatory Surgery
Accessible from the Main Floor via elevator "A" only
2. Laboratory
3. Dietitian/Diabetes Education
4. Cafeteria
5. Cafeteria Conference Room
6. Education
- 6a. Education Classroom (G015)
7. Park Street Conference Room
8. Philanthropy Department